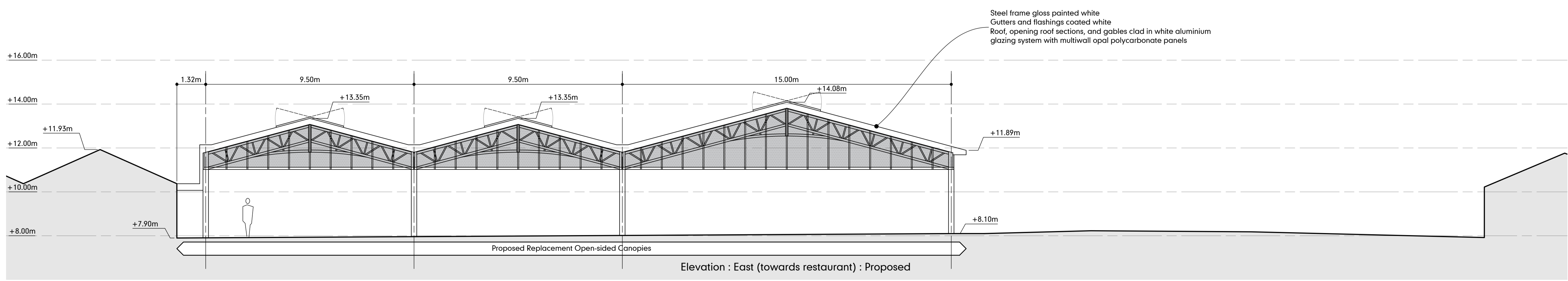
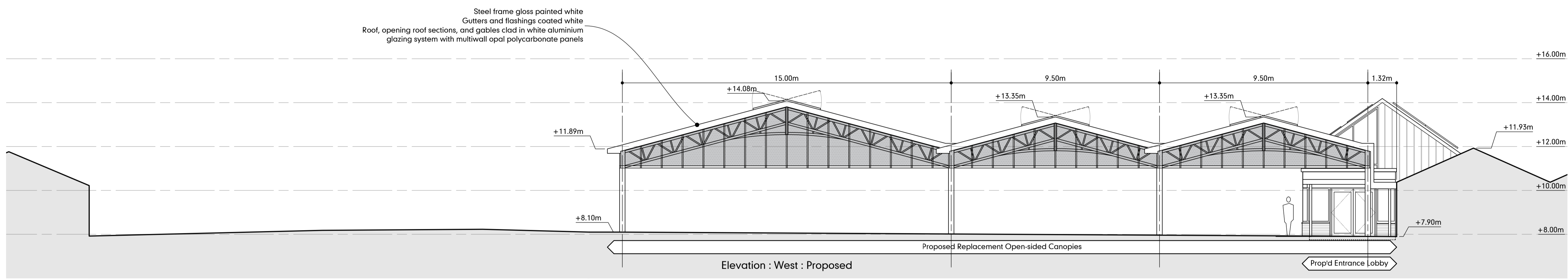
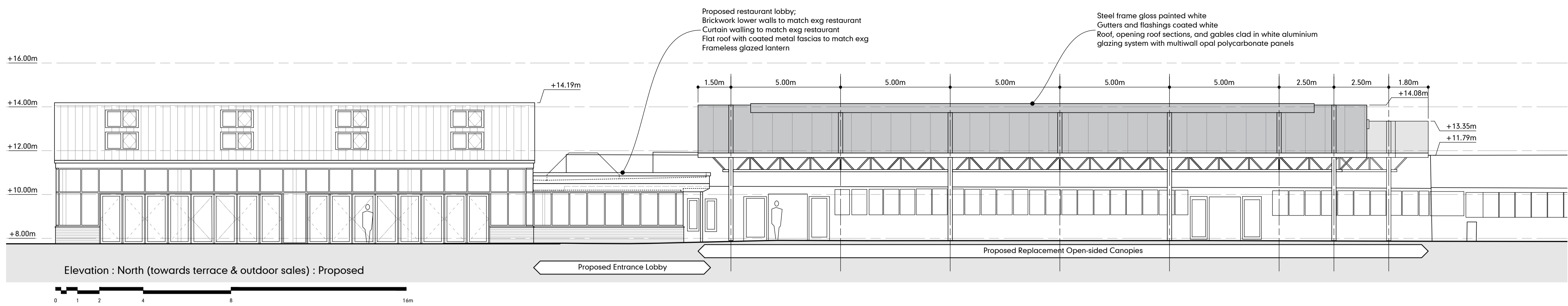


notes
 -Do not scale from this drawing - use stated levels and dimensions only -
 -in doubt - contact Williams-Architects Ltd-



ver	notes	date

HODGES
 BUILDING & CIVIL ENGINEERING CONTRACTORS (est. 1877)
 Geo. Hodges & Son, Ltd., 82 Hominglow Street, Burton on Trent, Staffordshire DE14 1PW
 Telephone: 01823 552811 Fax: 01823 510338
 Email: contact@hodge.co.uk Web: www.hodge.co.uk

CHAS BUILDING ON SUCCESS

williamsarchitects

Williams-Architects Ltd
 Studio 8, The Garage Studios
 41-45 St Mary's Gate
 The Lace Market
 Nottingham NG1 1PU

0115 945 5691
 enquires@williams-architects.co.uk
 www.williams-architects.co.uk
 Registered in England & Wales, N° 509848

this drawing and its contents, on paper and as the originating data file, remain the copyright of Williams-Architects Ltd
 © Williams-Architects Ltd, 2025

client	Geo Hodges & Son	created	23dec25
project	Highdown Garden Centre	job N°	250130
title	Elevations : Proposed	scale	1:100 @ A1