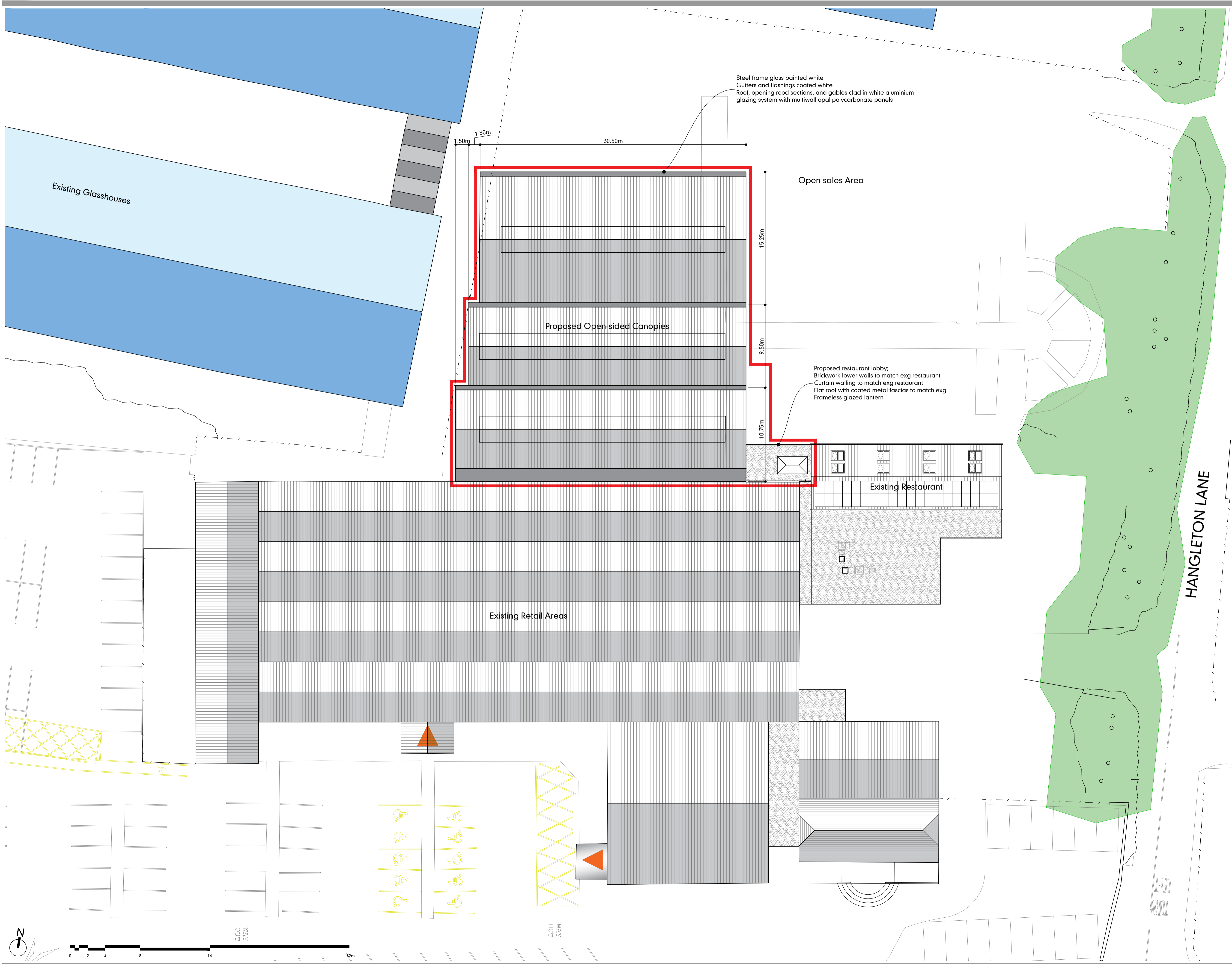


notes
 -Do not scale from this drawing -use stated levels and dimensions only-
 -in doubt-contact-williams-architects-ltd-



ver	notes	date

HODGES
 BUILDING & CIVIL ENGINEERING CONTRACTORS (est. 1877)
 Geo. Hodges & Son, Ltd., 82 Hominglow Street, Burton on Trent, Staffordshire DE14 1PW
 Telephone: 01293 555811 Fax: 01293 510338
 Email: contact@hodges.co.uk Web: www.hodges.co.uk

CHAS BUILDING ON SUCCESS

williamsarchitects

Williams-Architects Ltd
 Studio 8, The Garage Studios
 41-45 St Mary's Gate
 The Lace Market
 Nottingham NG1 1PJ

0115 945 5691
 enquires@williams-architects.co.uk
 www.williams-architects.co.uk
 Registered in England & Wales, N° 509848

this drawing and its contents, on paper and as the originating data file, remain the copyright of Williams-Architects Ltd © Williams-Architects Ltd, 2025

client	Geo Hodges & Son	created	23dec25
project	Highdown Garden Centre	job N°	250130
title	Site : Proposed	scale	1:200 @ A1