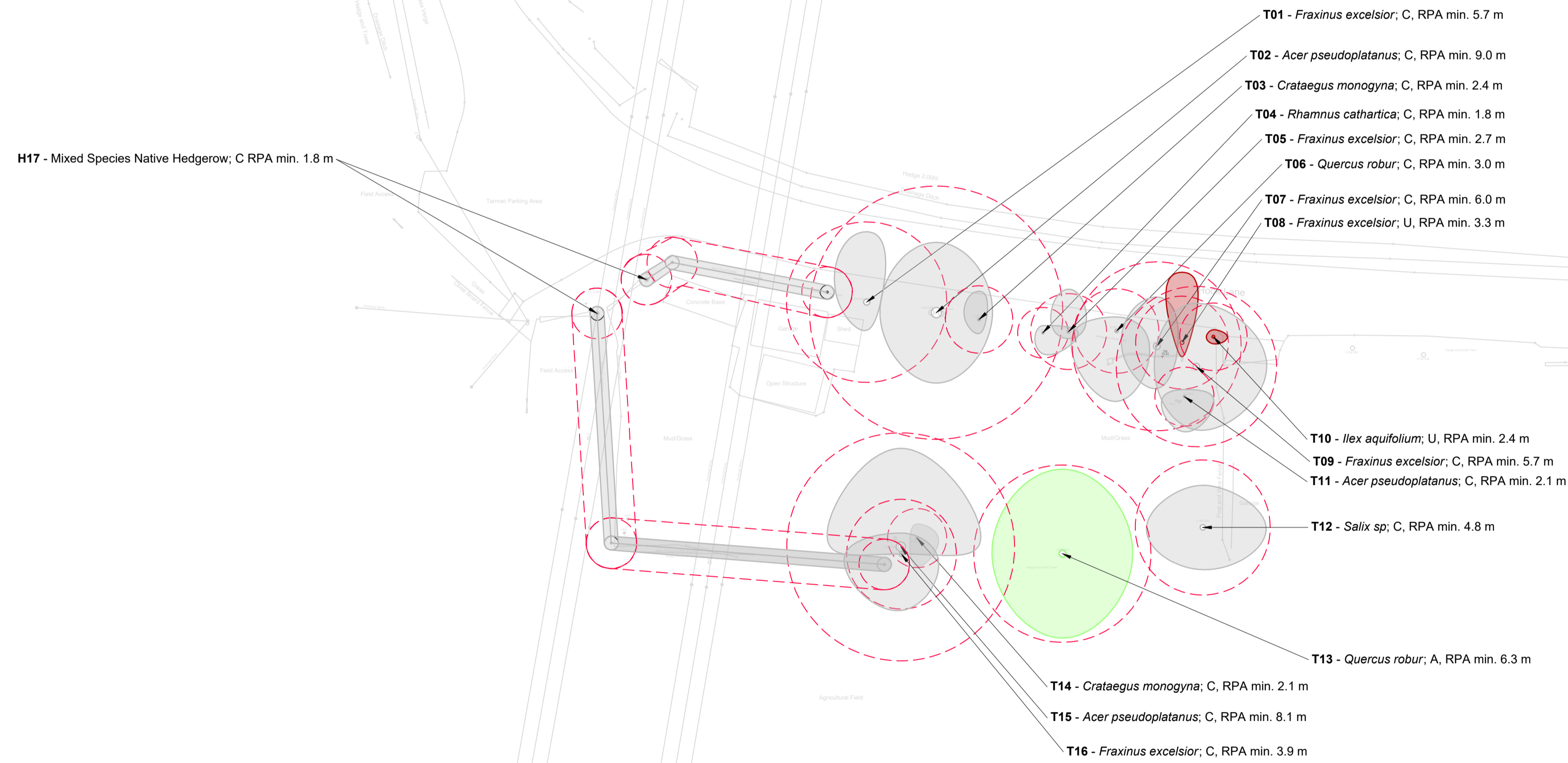


Legend

- T02 **Tree and Shrub Numbers.**
- Tree Root Protection Areas**
Tree Root Protection Areas calculated and specified in accordance with BS 5837:2012 - 'Trees in Relation to Design, Demolition and Construction - Recommendations'.
- A **Category A Trees**
Trees of High Quality and Value.
- B **Category B Trees**
Trees of Moderate Quality and Value.
- C **Category C Trees**
Trees of Low Quality and Value.
- U **Category U Trees**
Trees unsuitable for retention.
- Existing Shrub Vegetation**



- Notes:
1. Drawing to be read in colour.
 2. For details of existing trees and vegetation refer to: LLD3212-ARB-SCH-001 - Existing Tree Schedule;
 3. For assessment of effects of the proposed development on existing trees refer to LLD3212-ARB-REP-001- Arboricultural Impact Assessment and Method Statement.

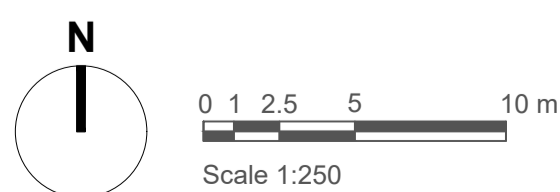
DRAFT ISSUE

Rev	Description	Date	Initials
00	Draft Issue	07.05.24	BW

LIZARD
Landscape Design and Ecology

The Old Bank, 34 South Street, Tarring, Worthing, West Sussex, BN14 7LH
T: 01903 216033 E: office@lizardlandscape.co.uk W: lizardlandscape.co.uk

Client Bright Plan Ltd			
Project Title and Location Hook Lane Aldingbourne, Chichester, West Sussex			
Drawing Title Tree Constraints Plan			
Scale	Drawn	Approved	Date
1:250 @ A1	BW	GO	07.05.2024
Drawing No	Revision		
LLD3212-ARB-DWG-001	00		



Tree Constraints Plan

Hook Lane, Aldingbourne, Chichester, West Sussex