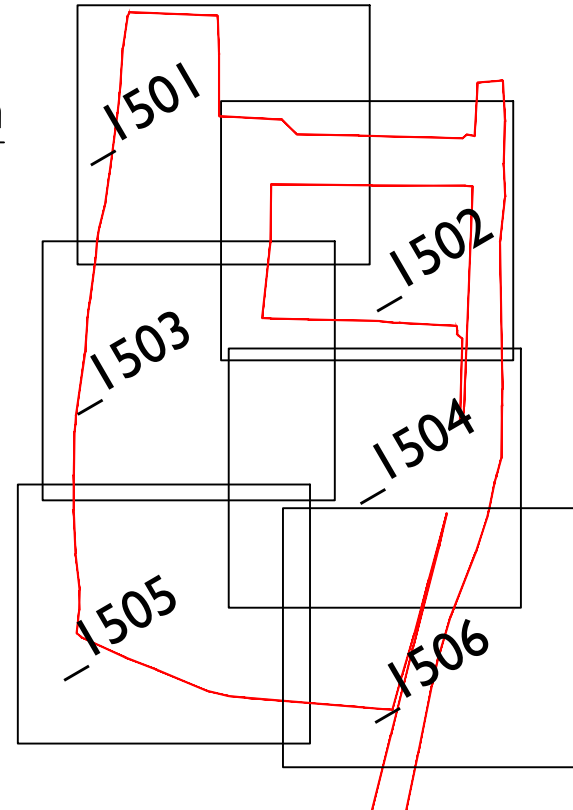


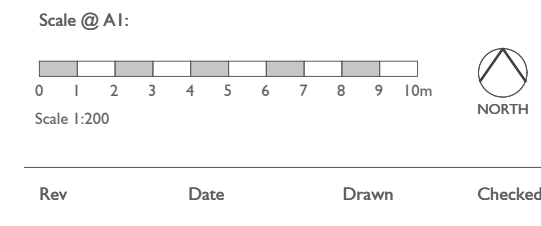


- LEGEND**
- Site boundary
 - Existing tree to be retained and protected. Refer to arboricultural information for further detail
 - Existing vegetation and/or hedgerow to be retained and protected. Refer to arboricultural information for further detail
 - Existing grassland to be retained and protected. Where disturbed to be seeded in line with proposed grassland seed mix as specified.
- Proposed soft landscaping**
- Proposed Tree planting
 - Ornamental hedge - Double staggered 1.2m high in front gardens and 1.8m high elsewhere
 - Double staggered mixed native hedgerow To be planted in groups of 7-9no. of each species
 - Ornamental shrub planting
 - Ornamental planting mix
 - Native scrub planting mix To be planted in groups of 7-9no. of each species
 - Good quality hardwearing lawn
 - Reed bed planting
 - Marginal aquatic planting To be planted in groups of 7-9no. of each species
 - Mown species rich grassland Verges laid with species rich turf from Wildflower Turf or similar, remaining areas seeded with EL1 Flowering Lawn Mixture from Emorsgate or similar seeded at 4g/m2
 - Wildflower meadow EM4 Meadow Mixture for Clay Soils from Emorsgate or similar seeded at 4g/m2
 - Wetland meadow EM8 Meadow Mixture for Wetlands from Emorsgate or similar seeded at 4g/m2
 - Species rich neutral grassland Verges laid with species rich turf from Wildflower Turf or similar, remaining areas seeded with EL1 Flowering Lawn Mixture from Emorsgate or similar seeded at 4g/m2
 - Tussocky grassland mix EG10 Tussock Grass Mixture from Emorsgate or similar seeded at 5g/m2
- NOTES:**
1. For Planting Schedule refer to drawing GLS_020_170_P1_1506
- To be read in conjunction with:
- Illustrative masterplan GLS_020_170_P1_1200
 - Landscape general arrangement plan GLS_020_170_P1_1300
 - Landscape specification GLS_020_170_P1_1801
 - Landscape management plan GLS_020_170_P1_1802

Location Plan



FOR PLANNING



Project: Lidsey Road, Woodgate Phase I

Title: Planting Plans Sheet 5

Client: Barratt Redrow

Date: 21.03.25

Drawn by: MS Checked by: AE

Org No: GLS_020_170_P1_1505 Rev: