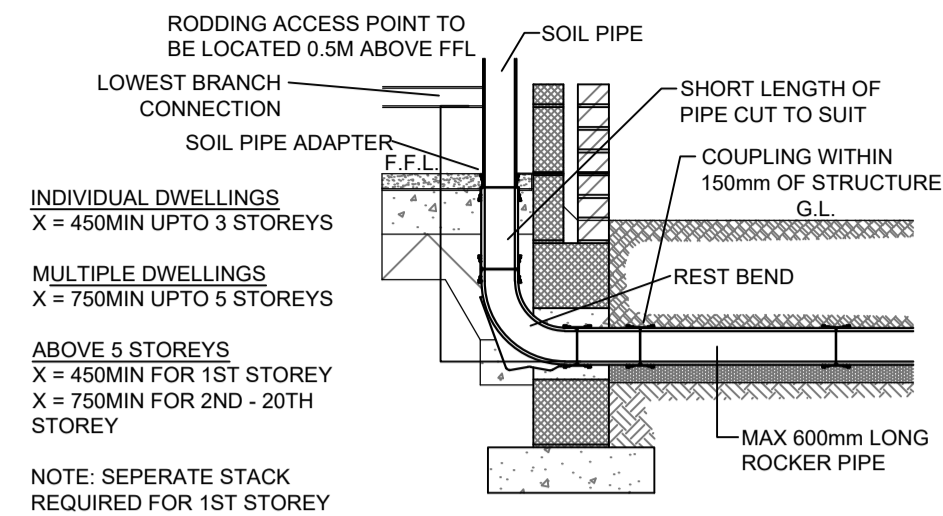
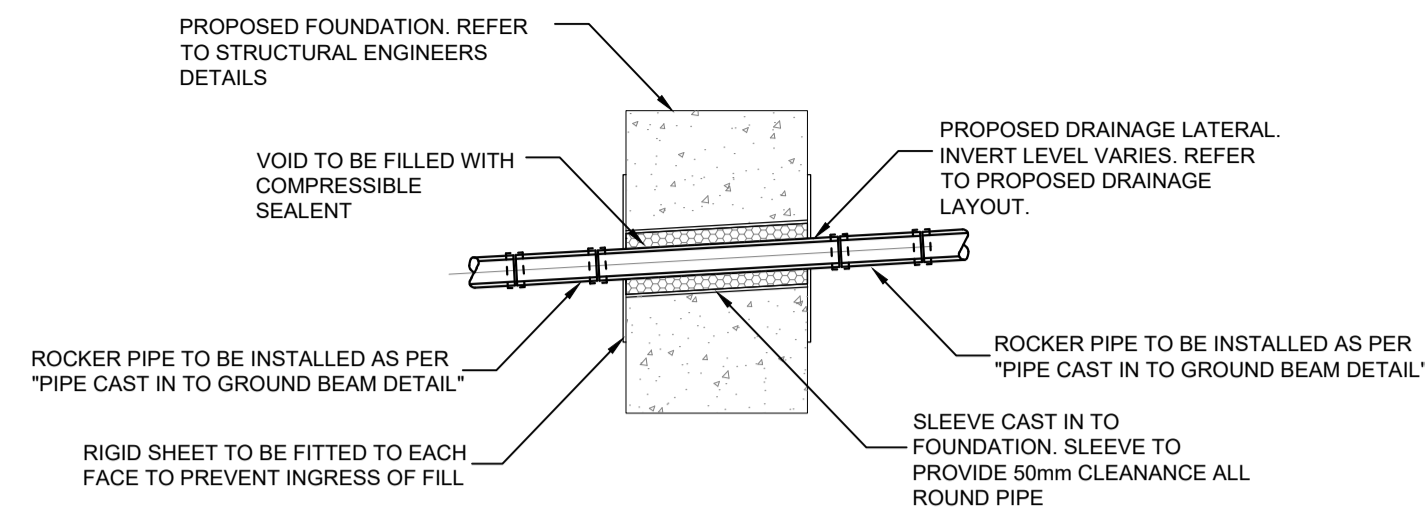


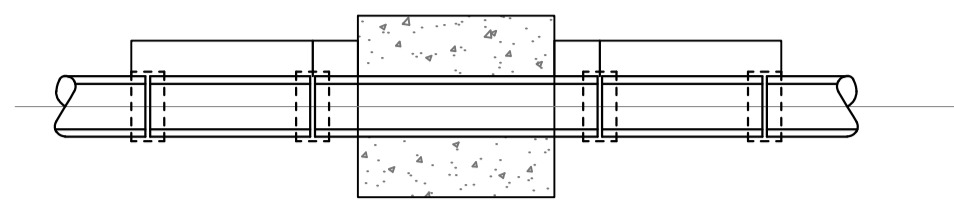
**SEALED RAIN WATER DOWNPIPE**



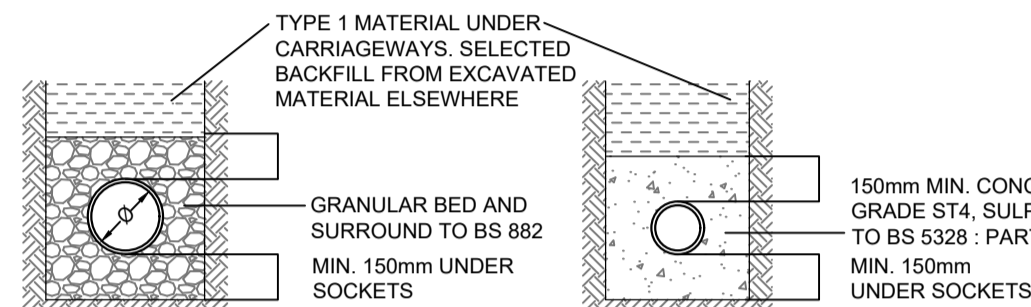
**SOIL & VENT PIPE/STUB STACK/DURGO CONNECTION DETAIL**



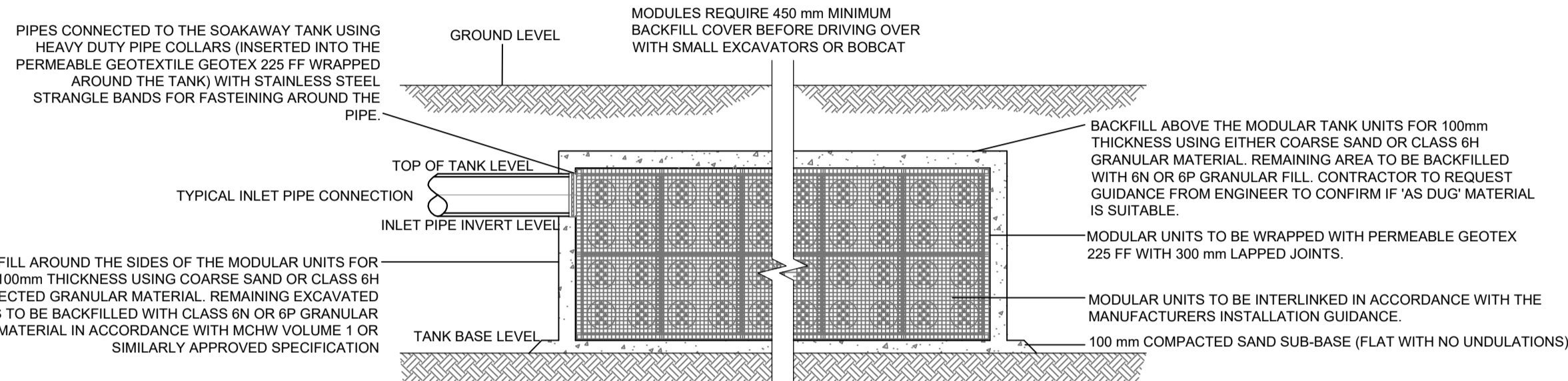
**SLEEVED PIPE THROUGH FOUNDATION DETAIL**  
SCALE N.T.S



**TYPICAL DETAIL FOR PIPE CAST INTO FOUNDATION**



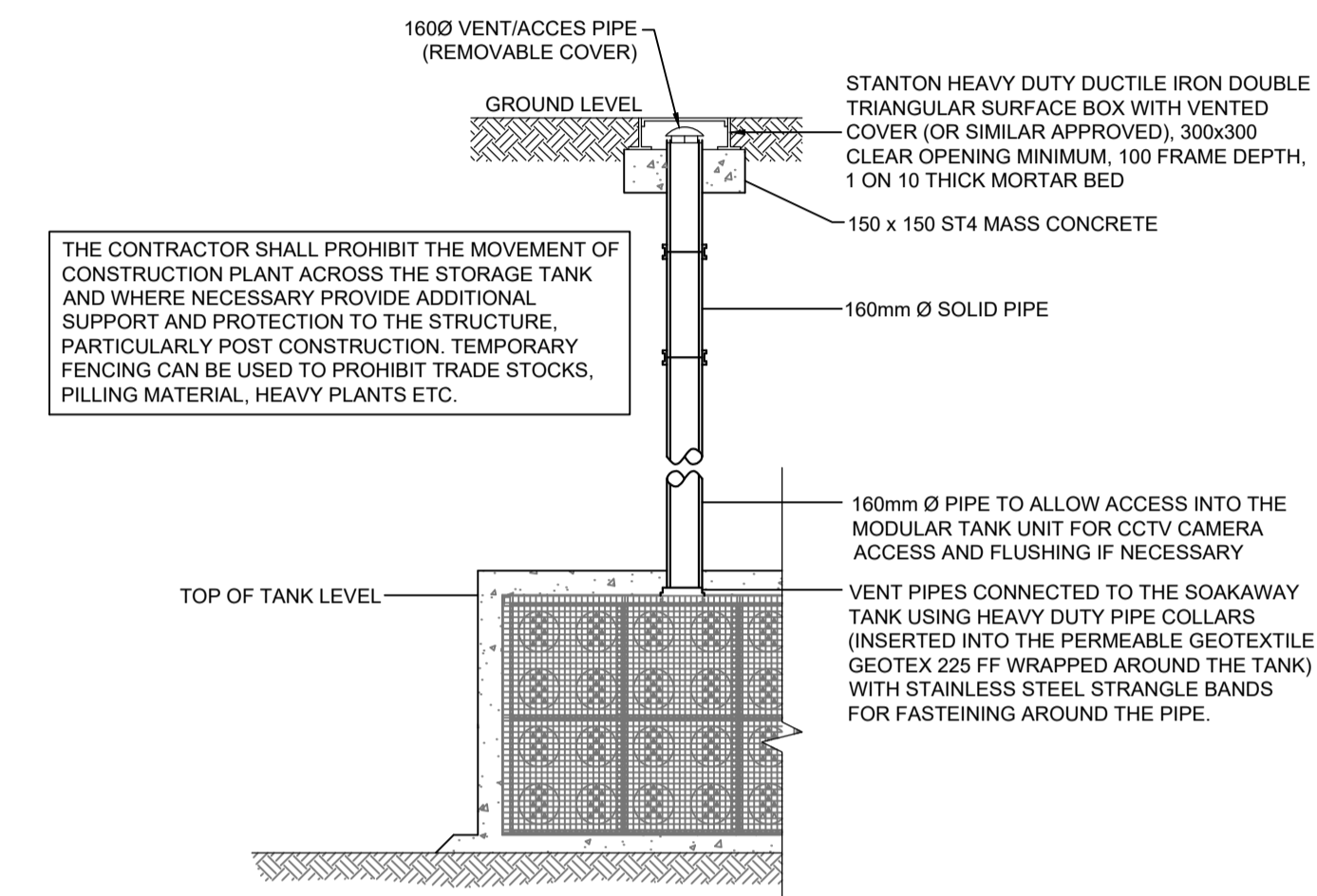
**PIPE BEDDING DETAILS IN PRIVATE AREAS**



**TYPICAL DETAILS OF SOAKAWAY USING MODULAR UNITS**

INSTALLATION OF MODULAR UNITS SHALL BE IN ACCORDANCE WITH THE MANUFACTURERS INSTALLATION INSTRUCTIONS

A 3-5% CBR HAS BEEN ASSUMED AT SUB-BASE LEVEL SHOULD THE CBR BE TESTED AND FOUND TO BE LESS THAN 3% THEN THE ENGINEER SHALL BE NOTIFIED. ANY SOFT SPOTS FOUND AT SUB-BASE LEVEL SHALL BE REMOVED AND REPLACED WITH SUITABLE MATERIAL.



**TYPICAL 160mmØ VENT PIPE CONNECTION**

P01	PLANNING ISSUE	19-09-25	LW	N K	LW
REV	AMENDMENTS	DATE	CAD	CHK D	APPD



CLIENT: **BIO DOT**

JOB TITLE: **ERECTION OF A COMMERCIAL BUILDING (WITHIN USE CLASS E(G)) PARKING, LANDSCAPING AND OTHER ASSOCIATED WORK**

DRAWING TITLE: **PROPOSED DRAINAGE DETAILS SHEET 2 of 2**

DRAWN: N.K	ENGINEER: L.W	CHECKED: J.S	APPROVED: L.W
------------	---------------	--------------	---------------

DATE: 19.09.2025 SCALE: @ A1 1:100 @ A1 STATUS: A

JOB No. P27002	DRAWING No. LRW/XX/XX/DR/C/7504	REV. P01
----------------	---------------------------------	----------

© CROWN COPYRIGHT AND DATABASE RIGHTS 2025  
ORDNANCE SURVEY 100019180

**PLANNING**

0  
5  
10  
20  
30  
40  
50  
60  
70  
80  
90  
100