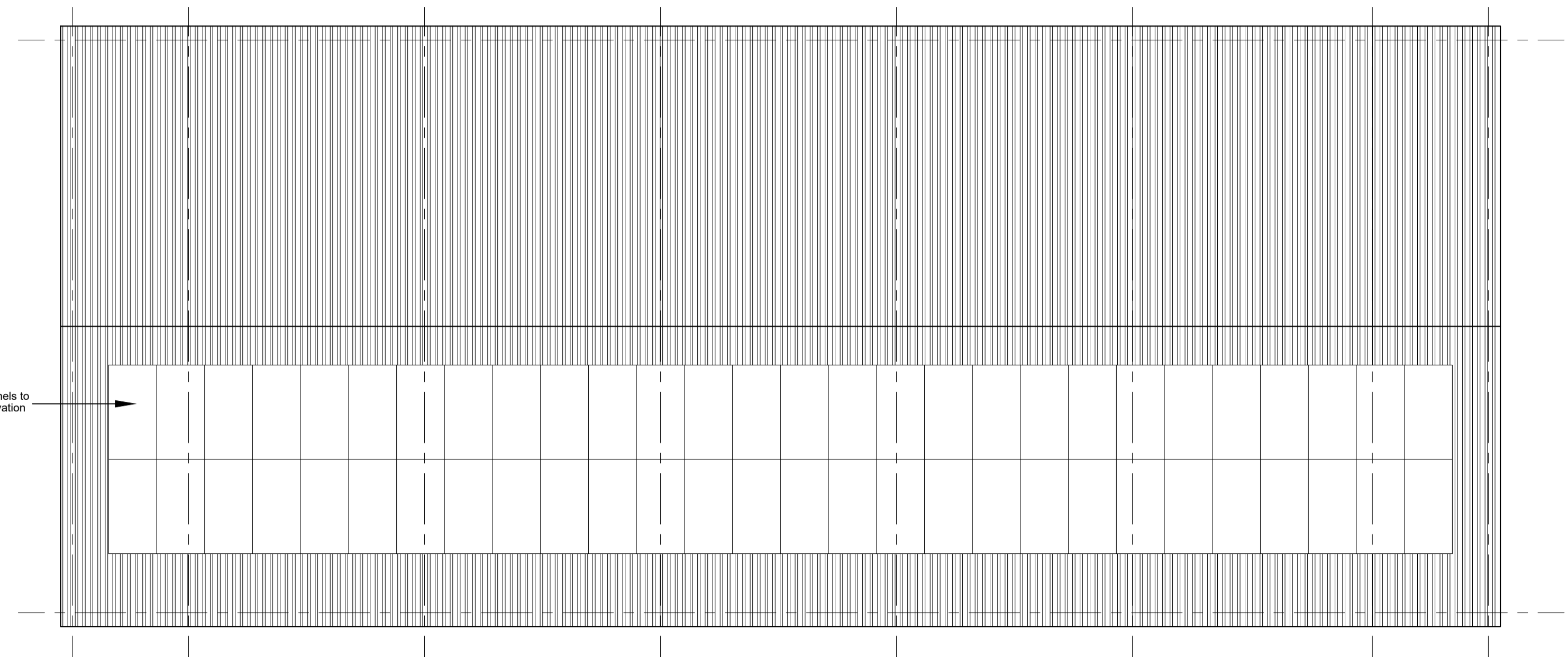
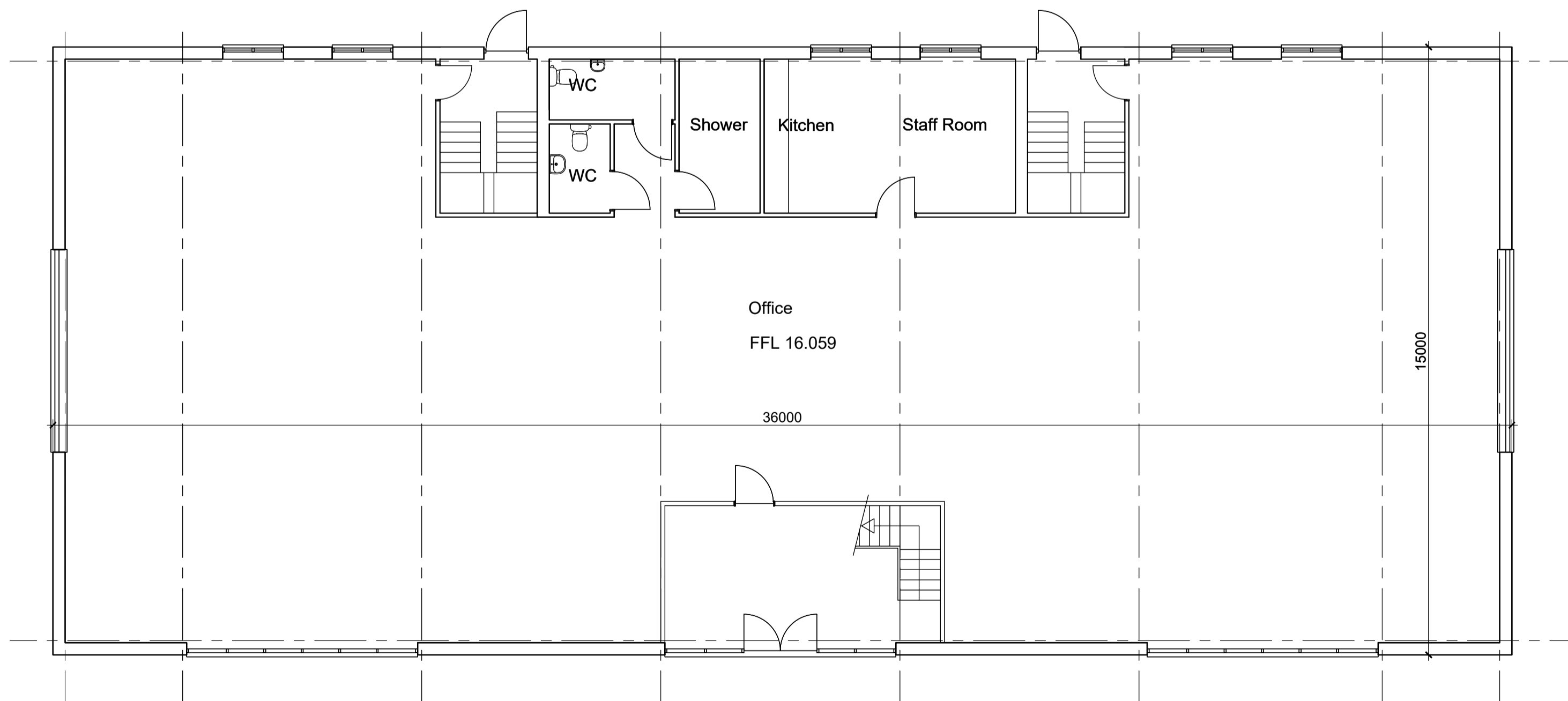


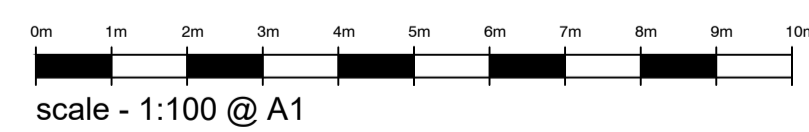
First Floor
540m2 GIA - 418m2 Office space



Roof Plan



Ground Floor
540m2 GIA - 418m2 Office space



Rev C 22/10/25 - Windows to east at 1st floor level omitted
 Rev B 11/09/25 - FFL shown on ground floor plan
 Rev A 31/07/25 - PV panels moved from east to west elevation

CLIENT BioDot		
PROJECT New office building adjacent to West Barn Norton Lane, Norton, Aldingbourne		
DRAWING TITLE Proposed Floor Plans		
DATE Feb 2025	SCALE 1:100@ A1	DRAWN BY CHECKED BY
JOB NO. 25 / 01	DRAWING NO. 01	REVISION Rev C