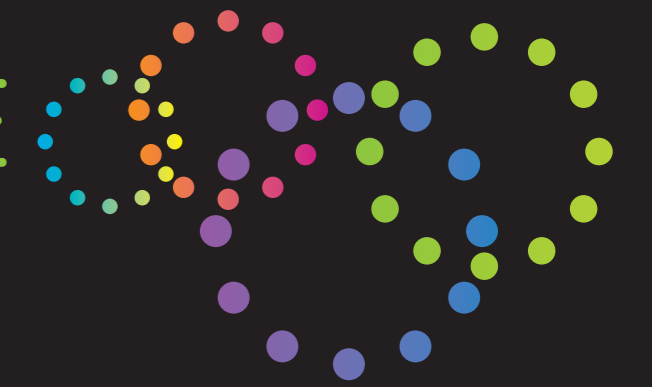


LITTLEHAMPTON REGENERATION - SEAFRONT GREEN & PROMENADE

8. CONCEPT



Coastal Gardens

- ① Landform supporting sheltered terraced seating facing the greens.
- ② Landform supporting lounging lawns facing out to sea.
- ③ Accessible shallow gradient (maximum 1 in 21) footpaths allowing a comfortable transition between the promenade and greens.
- ④ Alternative meandering, slow paced paths allowing discovery and the experience of moving through a garden typology.
- ⑤ Sloping lounging lawns facing in towards the greens.